

KEY MAP
NOT TO SCALE

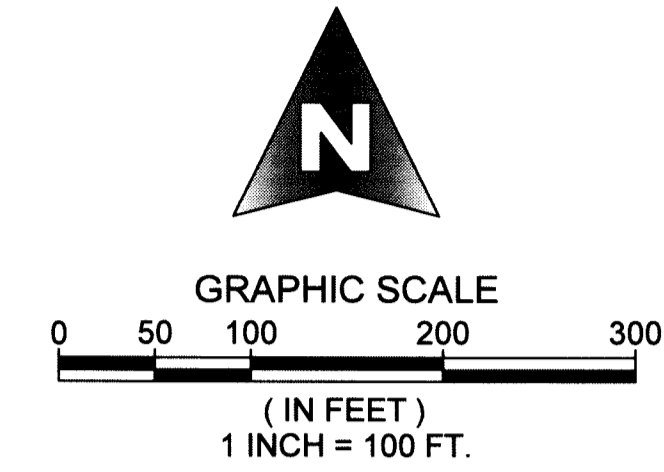
ALTON PCD - TRACTS DEF

BEING A RE-PLAT OF TRACTS "O-1", "O-9" AND "P-5" AND A PORTION OF TRACT "DEF", ALTON PCD, AS RECORDED IN PLAT BOOK 118, PAGES 197 THROUGH 206, INCLUSIVE, PUBLIC RECORDS OF PALM BEACH COUNTY, FLORIDA, LYING IN SECTIONS 26 AND 35, TOWNSHIP 41 SOUTH, RANGE 42 EAST, CITY OF PALM BEACH GARDENS, PALM BEACH COUNTY, FLORIDA.

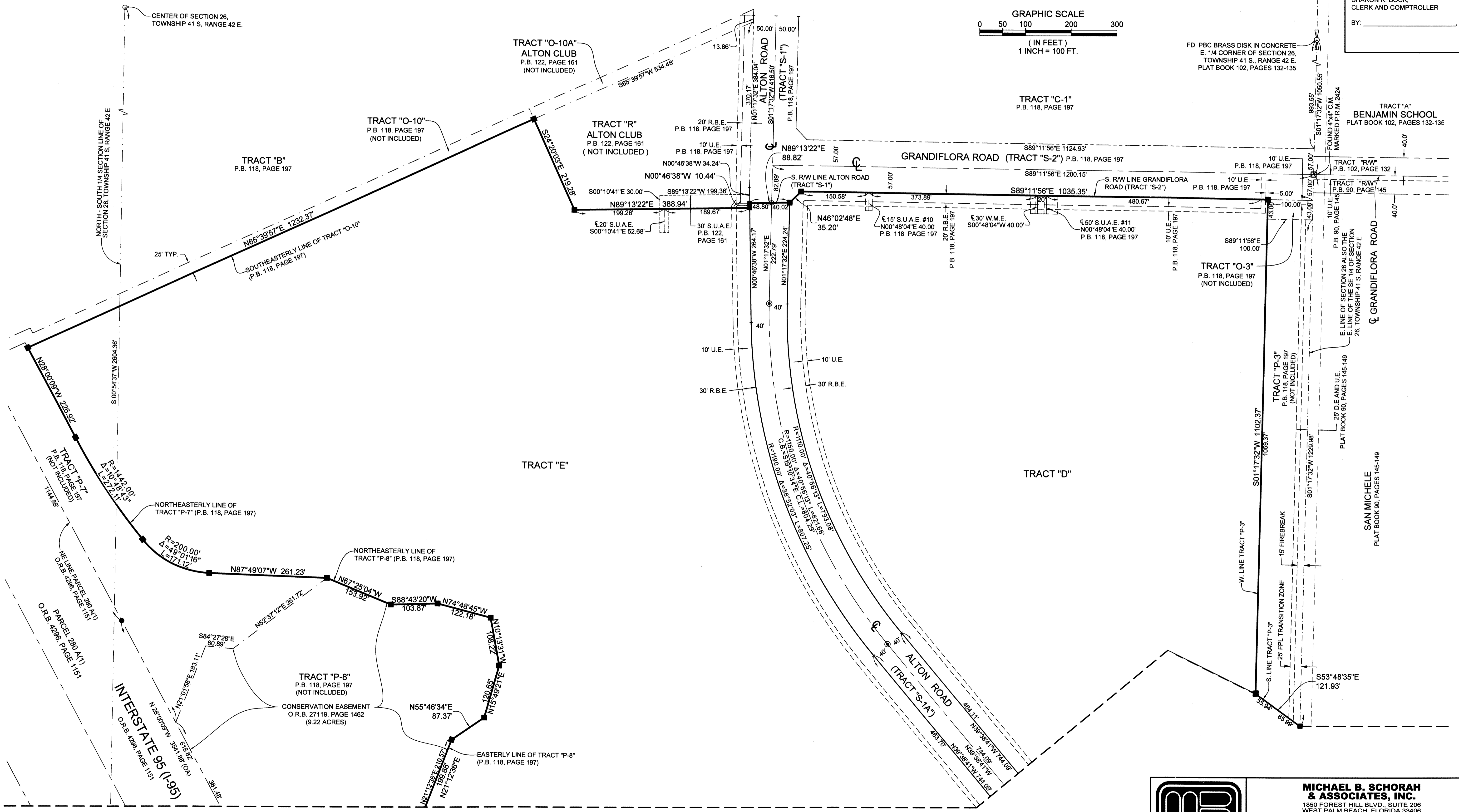
MAY, 2017 SHEET 4 OF 4

159

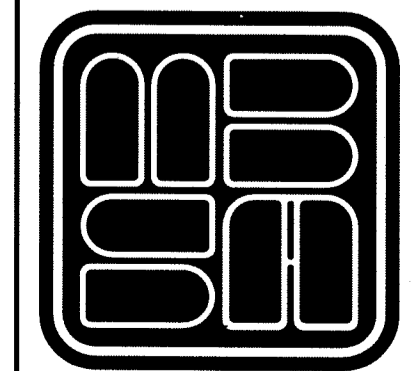
COUNTY OF PALM BEACH)
STATE OF FLORIDA) SS
THIS PLAT WAS FILED FOR RECORD AT)
M. THIS) DAY OF)
2017, AND DULY)
RECORDED IN PLAT BOOK NO.)
ON PAGE) THRU)
SHARON R. BOCK,
CLERK AND COMPTROLLER
BY: _____ D.C.



FD. PBC BRASS DISK IN CONCRETE
E. 1/4 CORNER OF SECTION 26,
TOWNSHIP 41 S., RANGE 42 E.
PLAT BOOK 102, PAGES 132-135



MATCH LINE-SEE SHEET 3



MICHAEL B. SCHORAH & ASSOCIATES, INC.
1850 FOREST HILL BLVD., SUITE 206
WEST PALM BEACH, FLORIDA 33406
EB# 2438 TEL. (561) 968-0080 FAX. (561) 642-9726 LB# 2438

ALTON PCD - TRACTS DEF